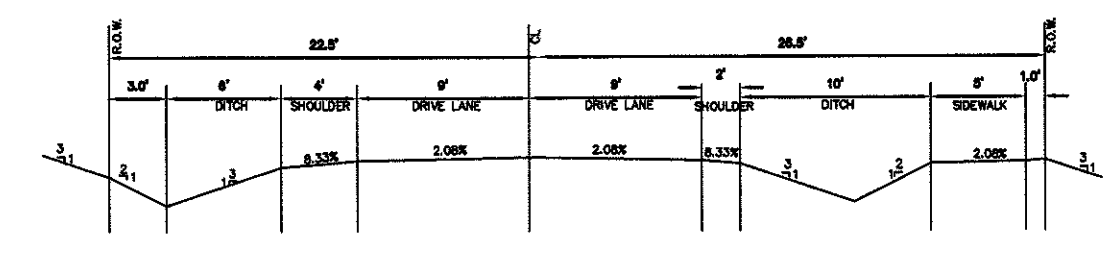
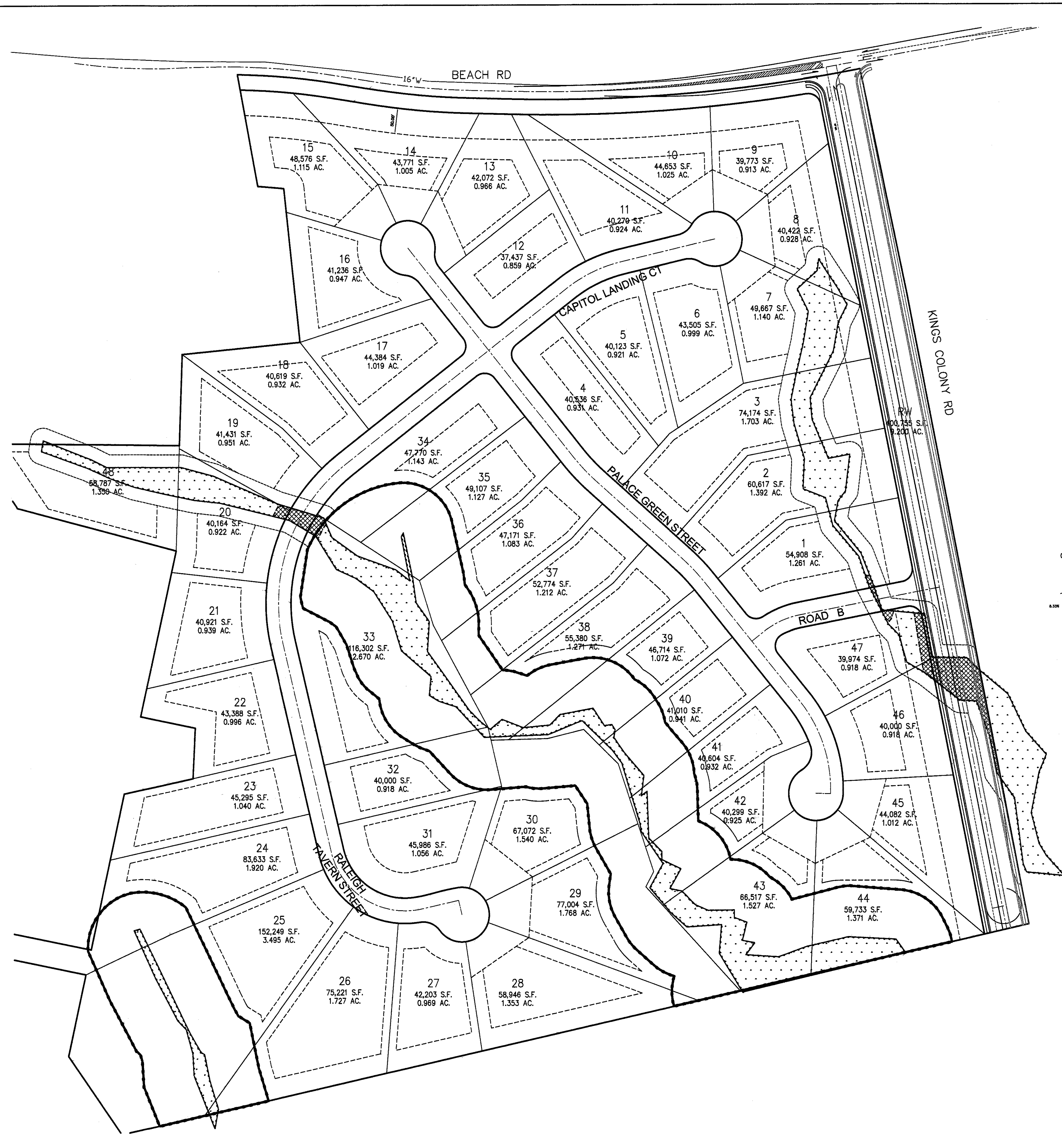
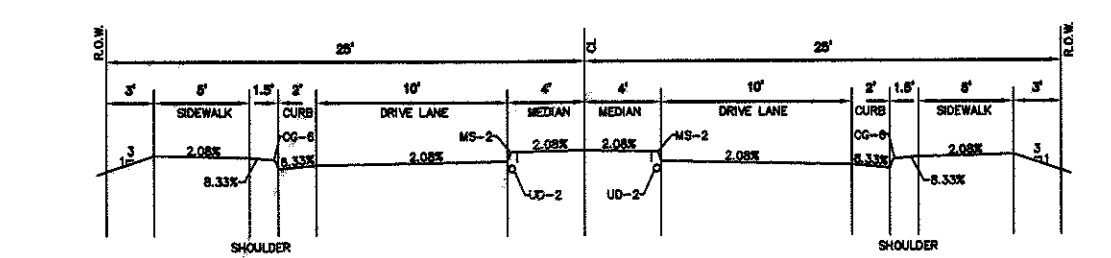


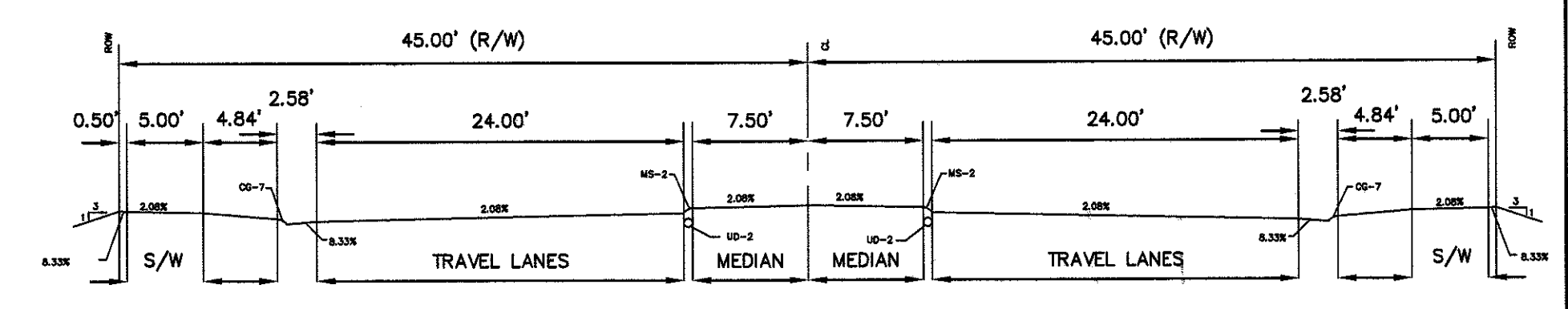
C:\Documents and Settings\jmbison\Local Settings\Temporary Internet Files\CLK38\09097-001 LAY.dwg 6/23/2009 9:01 AM



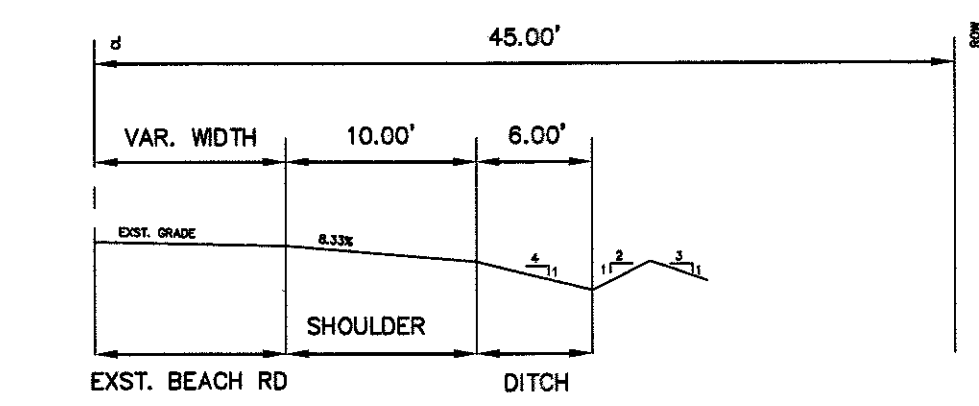
INTERIOR ROADS



NEIGHBORHOOD ENTRANCE



KINGS COLONY RD



BEACH ROAD IMPROVEMENTS

DESIGNED: GPB  
DRAWN: GPB

REVISIONS:

COONTZ-BRYANT, P.C.  
Site Development Solutions  
1703 NORTH PARHAM ROAD, SUITE 100



WILLIAMSBURG WEST  
CHESTERFIELD COUNTY, VA

MATOACA DISTRICT

DATE: JUNE 22, 20  
SCALE: 1"=100'  
JN: 09097-00