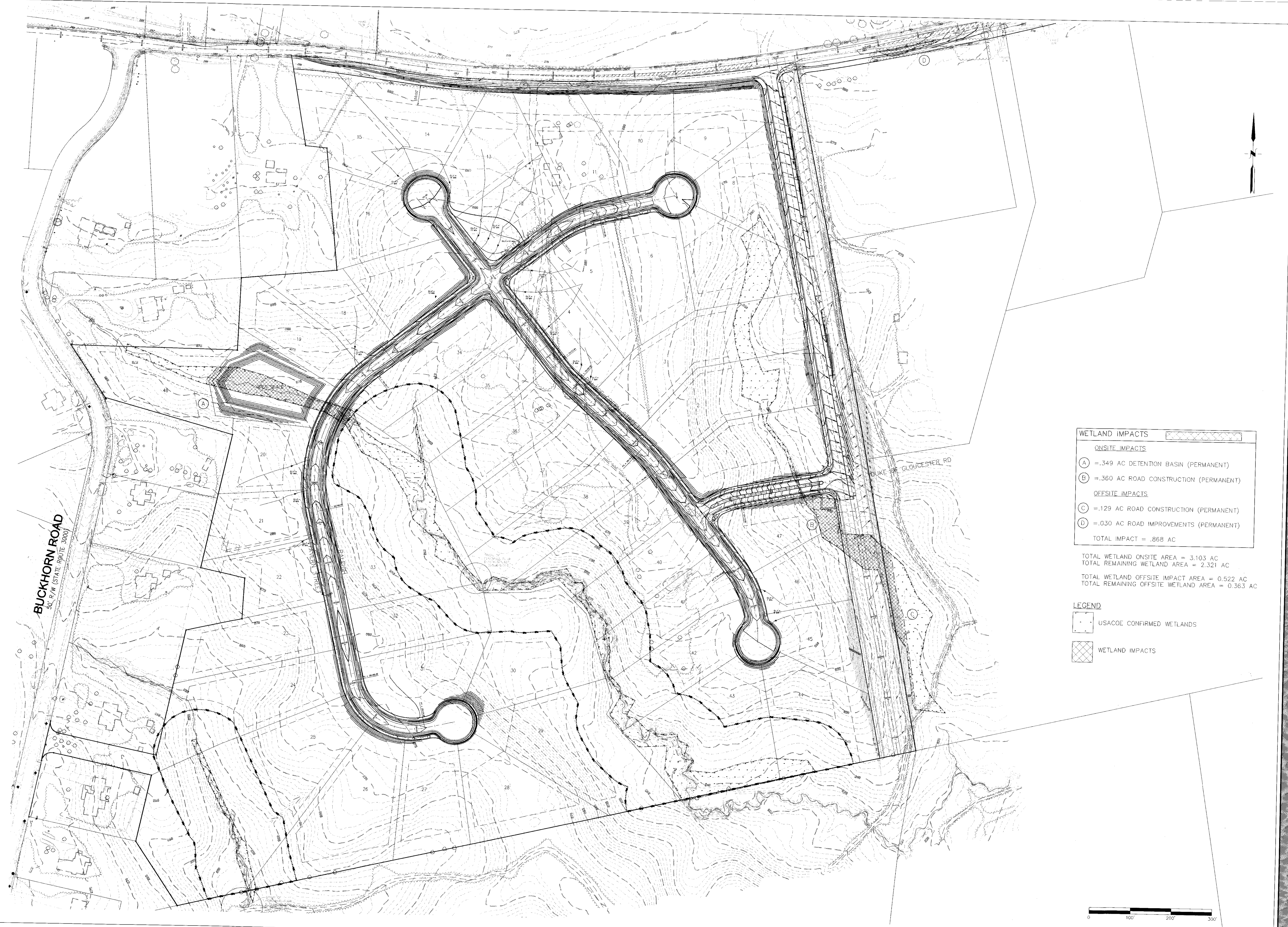


K:\residential\09097-001-00-Williamsburg_West_Overall_Subdivision\Reference_Drawings\Impacts_FOR_GEO\Technical.dwg 8/17/2009 1:36 PM



| WETLAND IMPACTS | |
|------------------------|--|
| ONSITE IMPACTS | |
| (A) | =.349 AC DETENTION BASIN (PERMANENT) |
| (B) | =.360 AC ROAD CONSTRUCTION (PERMANENT) |
| OFFSITE IMPACTS | |
| (C) | =.129 AC ROAD CONSTRUCTION (PERMANENT) |
| (D) | =.030 AC ROAD IMPROVEMENTS (PERMANENT) |
| TOTAL IMPACT = .868 AC | |

TOTAL WETLAND ONSITE AREA = 3.103 AC
 TOTAL REMAINING WETLAND AREA = 2.321 AC
 TOTAL WETLAND OFFSITE IMPACT AREA = 0.522 AC
 TOTAL REMAINING OFFSITE WETLAND AREA = 0.363 AC

| LEGEND | |
|--------|---------------------------|
| | USACOE CONFIRMED WETLANDS |
| | WETLAND IMPACTS |



WILLIAMSBURG WEST - OVERALL
 MATOACA DISTRICT
 CHESTERFIELD COUNTY, VA
WETLAND IMPACTS

DATE:
AUGUST 12, 2009
 SCALE:
1" = 100'
 JN:
09097-001

IMP

KOONTZ-BRYANT, P.C.
 Site Development Solutions
 1703 NORTH PARRHAM ROAD, SUITE 100
 RICHMOND, VIRGINIA 23229
 (804) 740-9200 FAX (804) 740-7338
 kbsp@koontzbryant.com

DESIGNED: GFB
 DRAWN: GFB
 CHECKED: DJJ

REVISIONS: