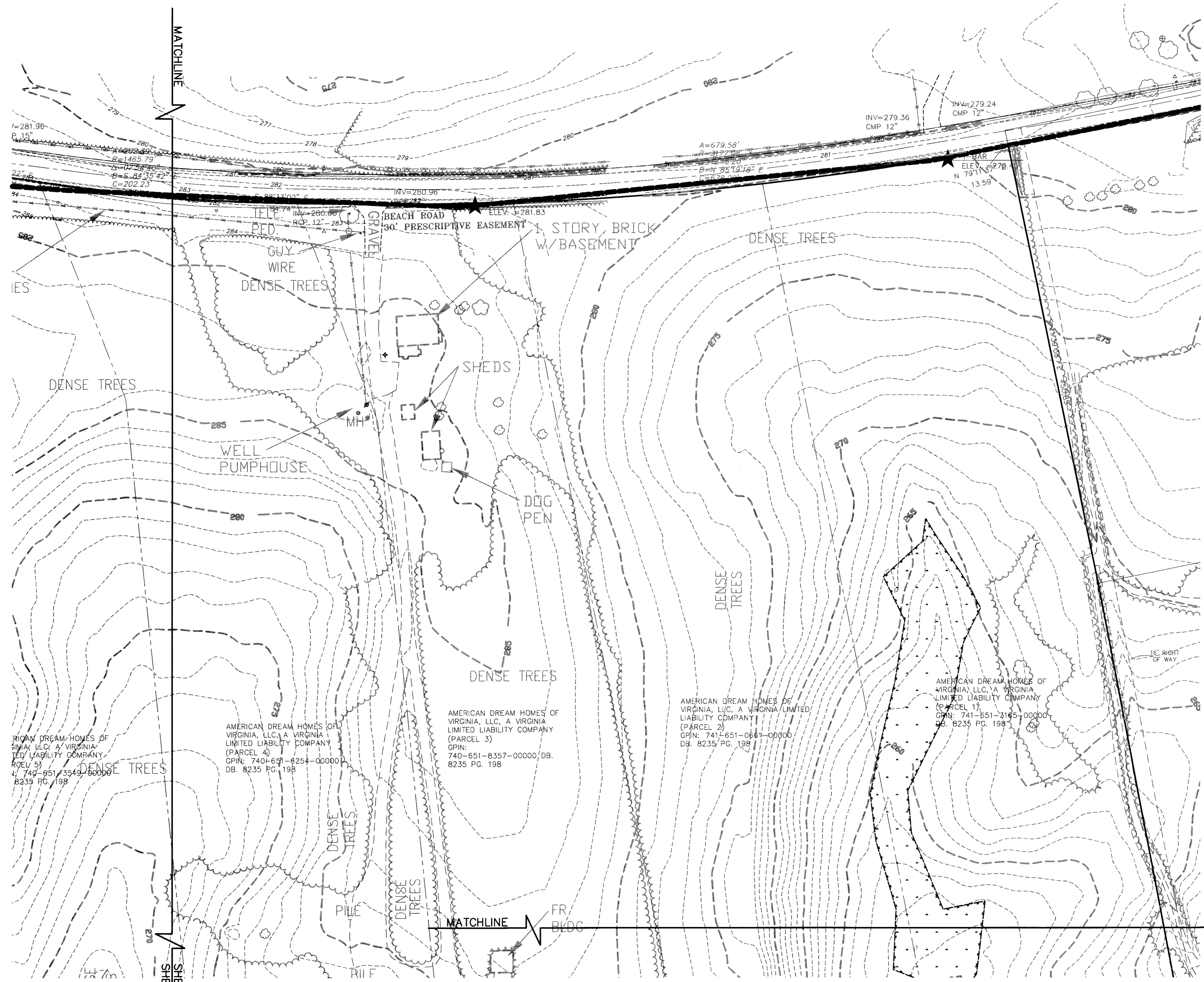


K:\Residential\09097-001-00-Williamsburg_West_Overall_Submission\09097-001\09097-001_C20.dwg 8/19/2009 8:44 AM



AMERICAN DREAM HOMES OF VIRGINIA, LLC, A VIRGINIA LIMITED LIABILITY COMPANY (PARCEL 5)
 GPIN: 740-651-8254-000000
 DB. 8235 PG. 198

AMERICAN DREAM HOMES OF VIRGINIA, LLC, A VIRGINIA LIMITED LIABILITY COMPANY (PARCEL 4)
 GPIN: 740-651-8254-000000
 DB. 8235 PG. 198

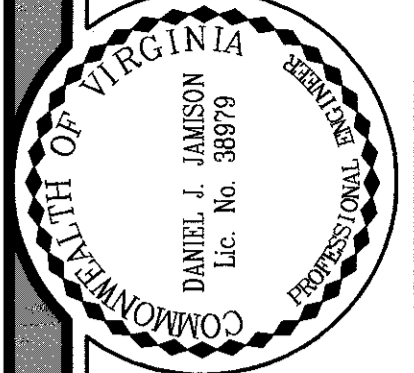
AMERICAN DREAM HOMES OF VIRGINIA, LLC, A VIRGINIA LIMITED LIABILITY COMPANY (PARCEL 3)
 GPIN: 740-651-8357-000000
 DB. 8235 PG. 198

AMERICAN DREAM HOMES OF VIRGINIA, LLC, A VIRGINIA LIMITED LIABILITY COMPANY (PARCEL 2)
 GPIN: 741-651-0661-000000
 DB. 8235 PG. 198

AMERICAN DREAM HOMES OF VIRGINIA, LLC, A VIRGINIA LIMITED LIABILITY COMPANY (PARCEL 1)
 GPIN: 741-651-3165-000000
 DB. 8235 PG. 198

SHEET C2.0
 SHEET C2.2

SHEET C2.0
 SHEET C2.1



DESIGNED: GPB
 DRAWN: GPB
 CHECKED: DUJ

KOONTZ-BRYANT, P.C.
 Site Development Solutions
 1703 NORTH PARHAM ROAD, SUITE 100
 RICHMOND, VIRGINIA 23229
 (804) 740-8200 FAX (804) 740-7338
 kbp@koontzbryant.com



WILLIAMSBURG WEST OVERALL
 CHESTERFIELD COUNTY, VA

MATOACA DISTRICT
EXISTING CONDITIONS

JN:
 09097.001

DATE:
 AUGUST 28, 2009

SCALE:
 1" = 50'

JN:
 09097.001

C2.0