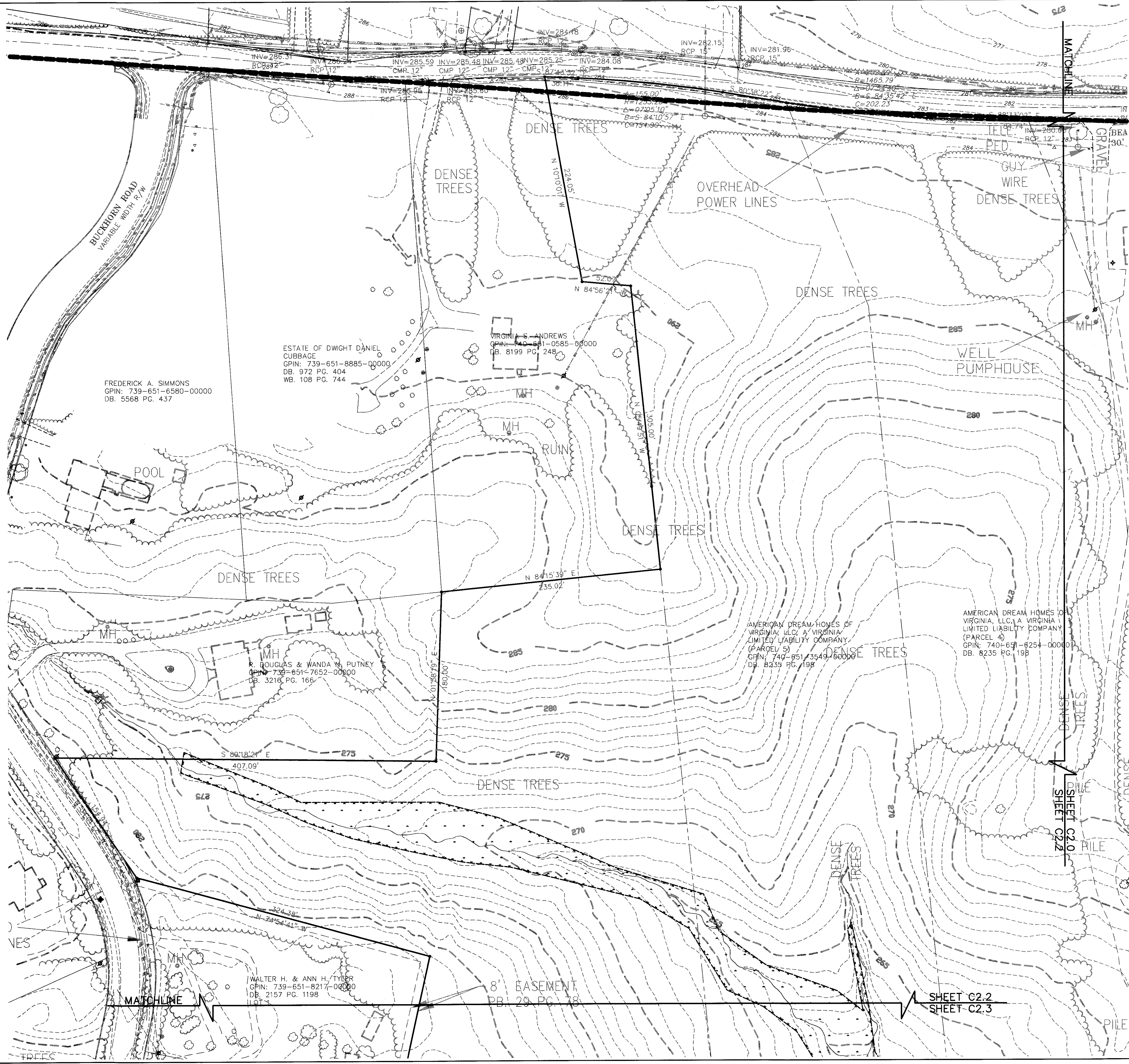
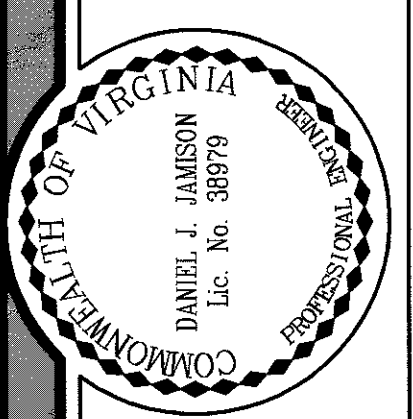


K:\Residential\09097-001-00_Williamsburg_West_Overall_Subdivision\09097-001\LD\Map\Construction_Dwg\09097-001_C22.dwg 8/19/2009 8:47 AM



09097-001 C22.dwg



DESIGNED:	GPB
DRAWN:	GPB
CHECKED:	DJJ

KOONTZ-BRYANT, P.C.
 Site Development Solutions
 1703 NORTH PARHAM ROAD, SUITE 100
 RICHMOND, VIRGINIA 23229
 (804) 740-9200 FAX (804) 740-7338
 kbp@koontzbryant.com



WILLIAMSBURG WEST OVERALL
 MATOACA DISTRICT
 CHESTERFIELD COUNTY, VA
EXISTING CONDITIONS

DATE: AUGUST 28, 2009

SCALE: 1" = 50'

JN: 09097.001

C2.2