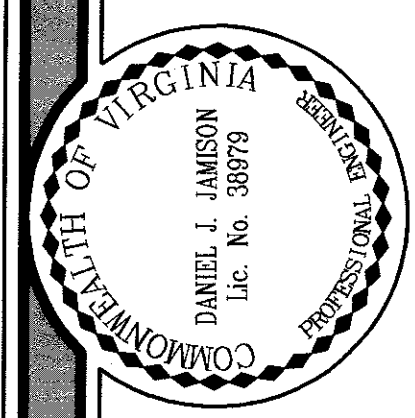
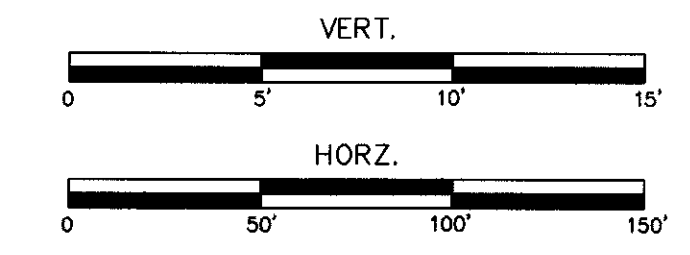
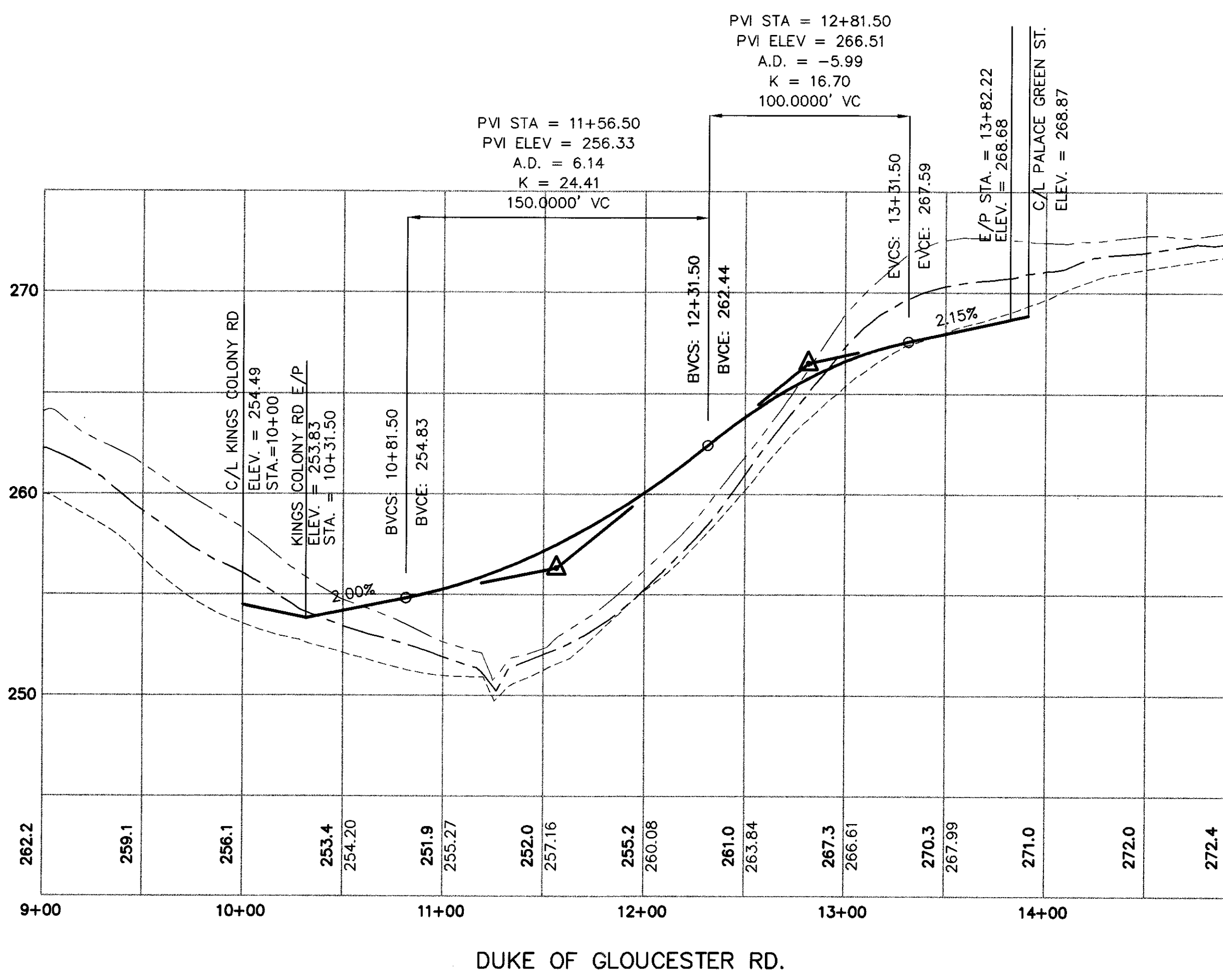
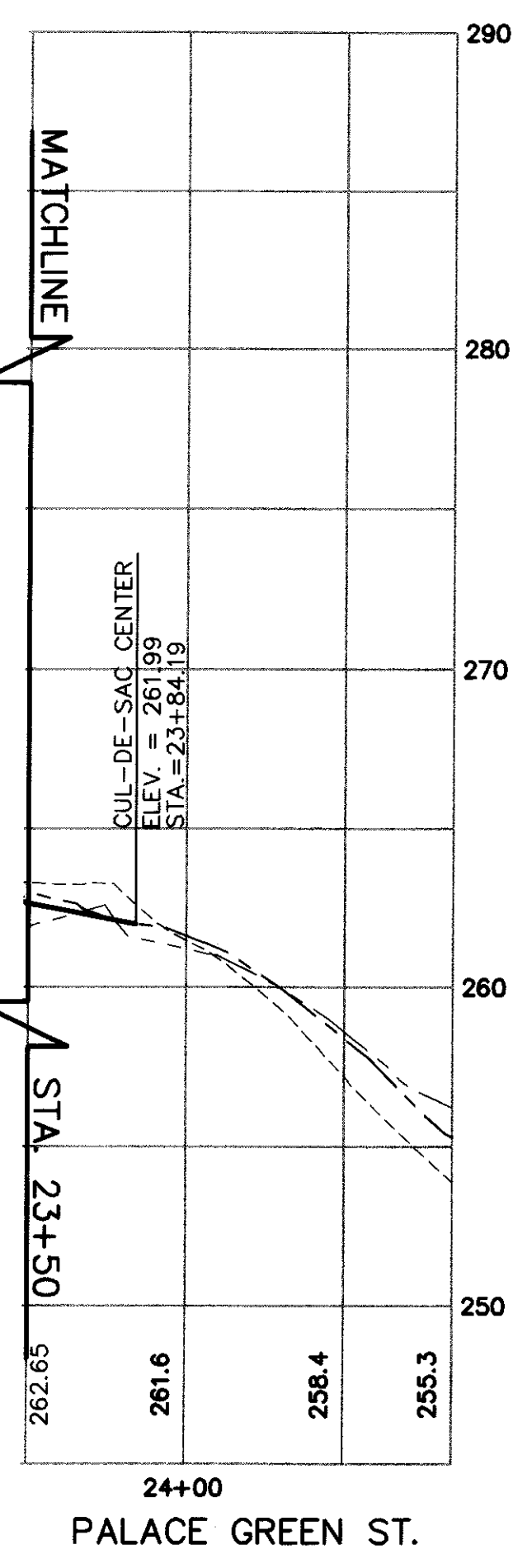
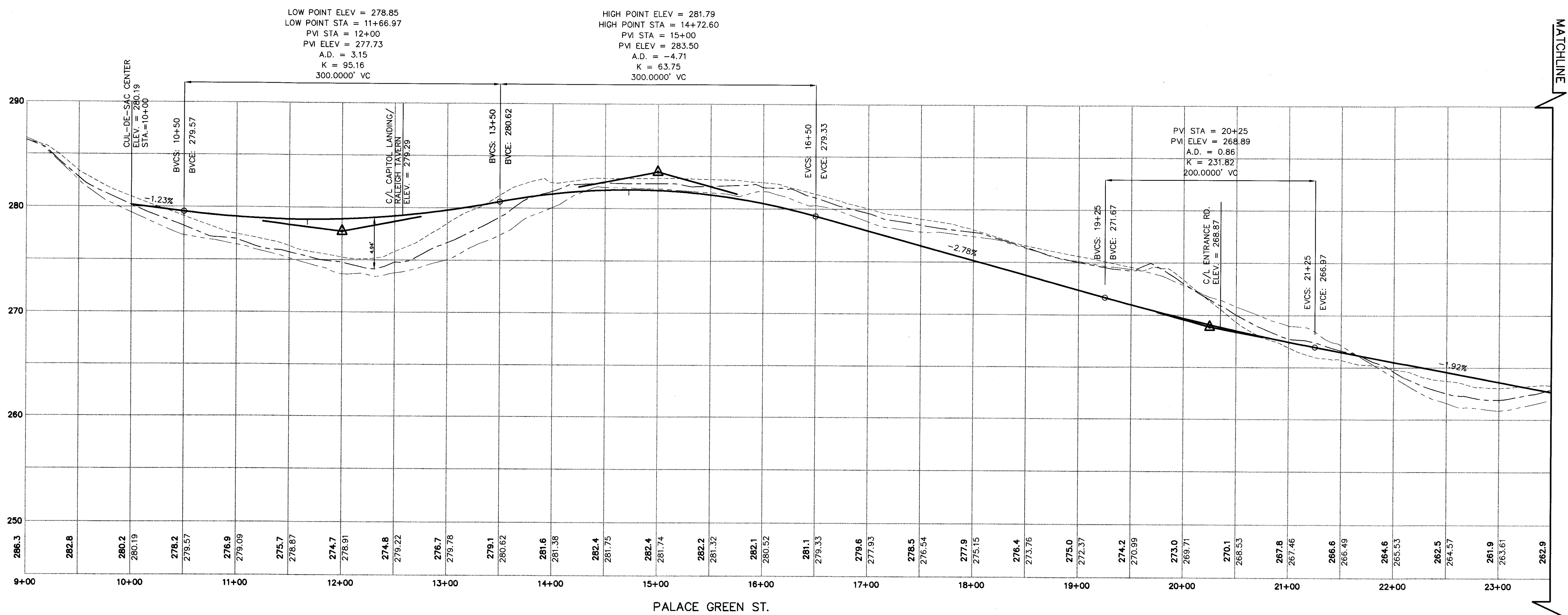


K:\Residential\09097-001-02\_Williamsburg\_West\_Overall\_Subdivision\09097-001\DD\Weg\Construction\_Dwg\09097-001\_C40.dwg 8/19/2009 8:48 AM



DESIGNED: GPB  
 DRAWN: GPB  
 CHECKED: DJJ

REVISIONS:

DESIGNED: GPB  
 DRAWN: GPB  
 CHECKED: DJJ



**KOONTZ-BRYANT, P.C.**  
 Site Development Solutions  
 1703 NORTH PARHAM ROAD, SUITE 100  
 RICHMOND, VIRGINIA 23229  
 (804) 740-9200 FAX (804) 740-7338  
 kbpc@koontzbryant.com

**WILLIAMSBURG WEST OVERALL**  
 MATOACA DISTRICT  
 CHESTERFIELD COUNTY, VA

PROFILES

DATE:  
 AUGUST 28, 2009

SCALE: 1" = 5' VERT.  
 1" = 50' HORZ.

JN:  
 09097.001

**C4.0**