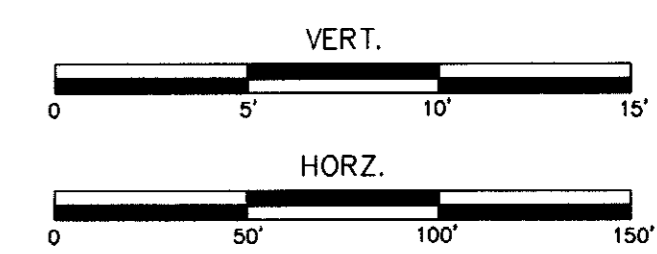
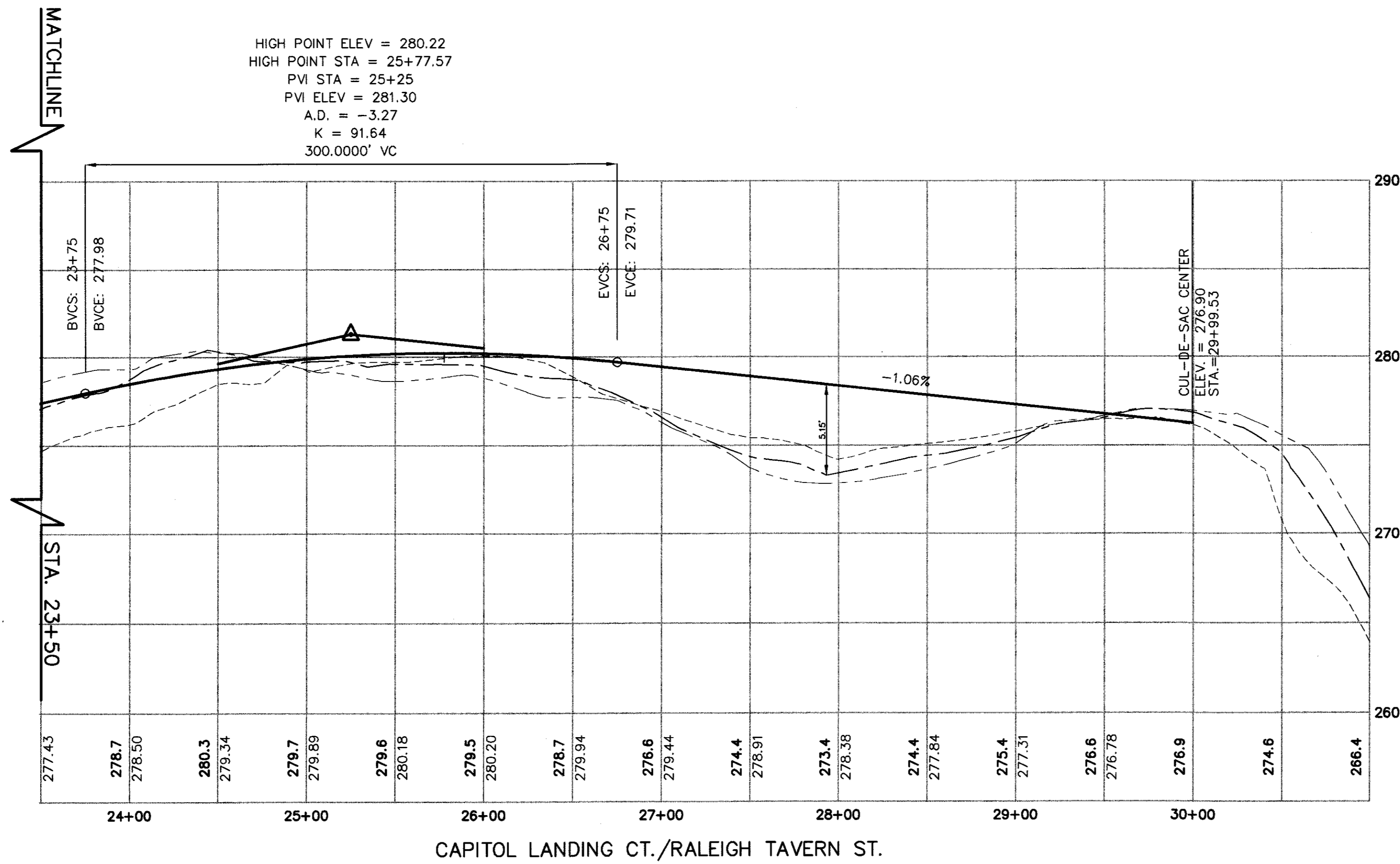
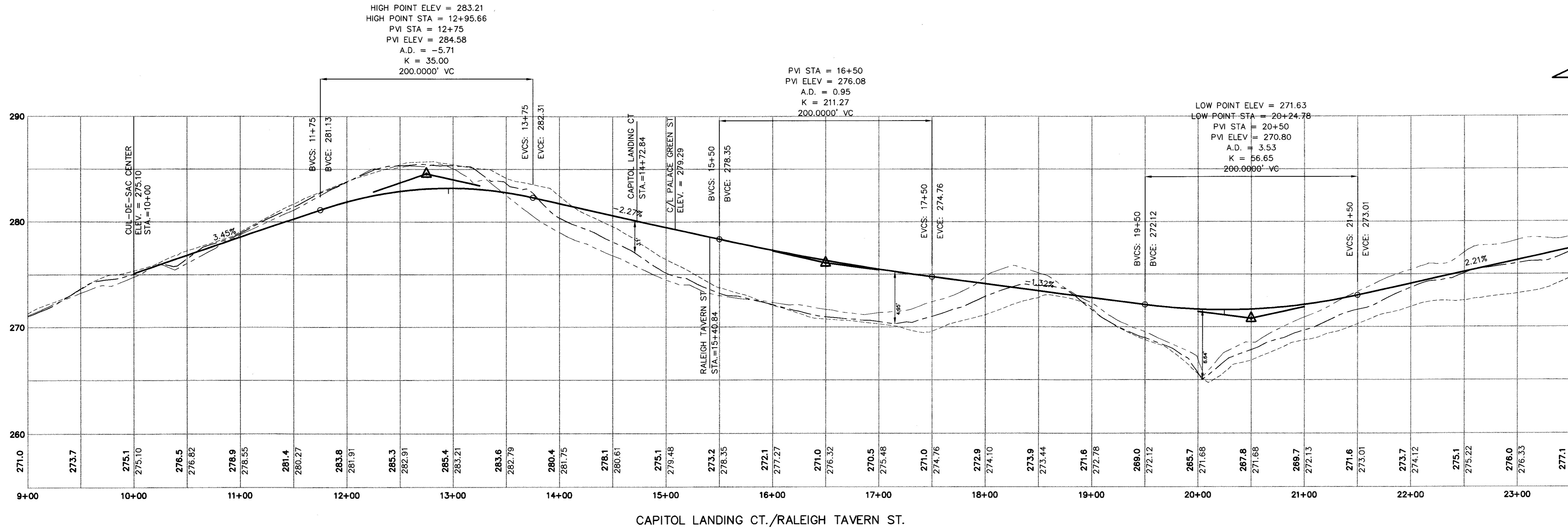
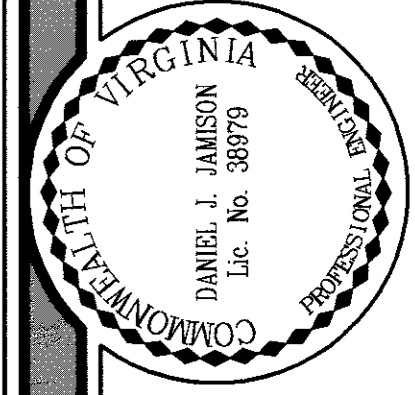


K:\Resident\09097-001-00\_Williamsburg\_West\_Overall\_Subdivision\09097-001\09097-001.dwg 8/19/2009 8:47 AM



MATCHLINE

STA. 23+50



DESIGNED: GFB  
DRAWN: GFB  
CHECKED: DJJ

REVISIONS:



**KOONTZ-BRYANT, P.C.**  
Site Development Solutions  
1703 NORTH PARHAM ROAD, SUITE 100  
RICHMOND, VIRGINIA 23229  
(804) 740-9200 FAX (804) 740-7338  
kbpc@koontzbryant.com

**WILLIAMSBURG WEST OVERALL**  
MATOACA DISTRICT  
CHESTERFIELD COUNTY, VA

DATE:  
AUGUST 28, 2009

SCALE: 1" = 5' VERT.  
1" = 50' HORZ.

JN:  
09097.001

**C4.1**

PROFILES