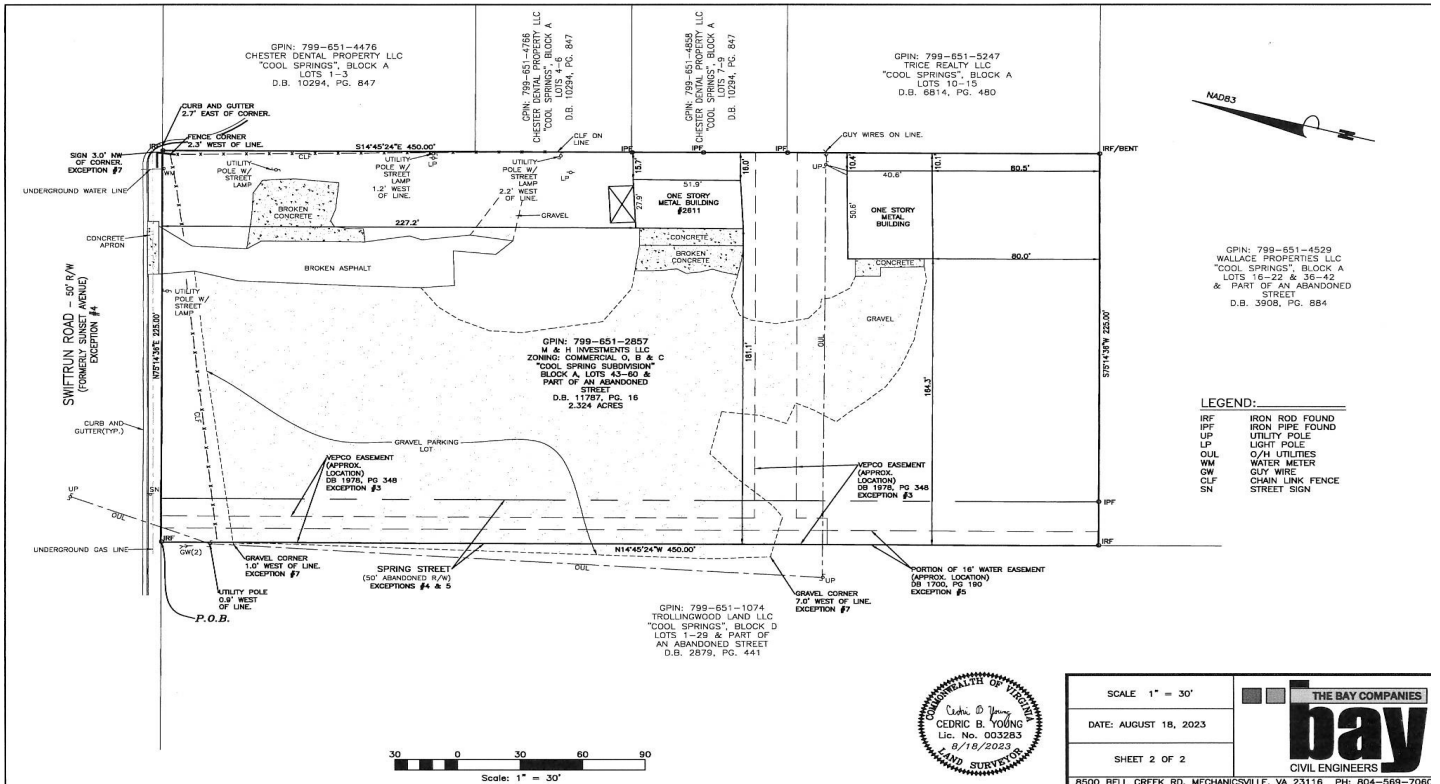


2611 Swiftrun Road Chesterfield, VA

For Sale



Features

- Tax Parcel #799651285700000
- Approximately 2.324 +/- acres
- Zoned C-5, General Business District
- Conveniently located near West Hundred Rd and Route 1 and in close proximity to I-95
- **Sale price \$550,000**



Specter
Properties, Inc.

P.O. Box 2455
Chesterfield, VA 23832
(804) 777-7070

Principal Broker
Mark B. Specter
mspecter@specterproperties.com

Associate Broker
Kevin Y. Specter
kspecter@specterproperties.com

All information furnished to Specter Properties, Inc. is from sources judged to be reliable. However, no warranty or representation is made as to its accuracy or completeness. This applies to all pages within this document.